

**PT SUMBER MINERAL  
GLOBAL ABADI TBK**

Company Profile

2024



## PT SUMBER MINERAL GLOBAL ABADI TBK

The Company was established on October 19, 2016 under the name PT Sumber Mineral Global Abadi Tbk. The Company's business activities include, metal and ore trading, sand and nickel trading, cement, lime, sand, stone wholesale trade, solid liquid fuel and gas wholesale trading and products.

PT Sumber Mineral Global Abadi Tbk currently focuses on trading nickel, limestone, quartz/silica sand and coal for both domestic and export markets. The products we trade are mining products from the best mines that are processed from IUPs in our company collaboration. PT Sumber Mineral Global Abadi Tbk has experience in the mineral business supported by qualified natural resources as well as professional human resources as our step to provide quality and sustainable products. PT Sumber Mineral Global Abadi Tbk works hard to ensure that our operations meet production targets consistently.



## Overview of Business Activities and Operations



— — —

The company is engaged in the business activities of trading nickel and coal for the domestic market in Indonesia.



— — —

The company holds three Mining Business Licenses (Izin Pengangkutan dan Penjualan), for the transportation and sale of metallic mineral commodities, coal commodities, and non-metallic mineral commodities.





## PT SUMBER MINERAL GLOBAL ABADI TBK

### Mission

Establish a prominent trading entity specializing in the exchange of nickel, coal, and limestone, characterized by unwavering integrity. Our aim is to garner national recognition as a foremost leader in fostering growth, operational efficiency, and maintaining a stellar reputation. Additionally, we are committed to environmental responsibility in all facets of our operations.

### Vision

Delivering quality products from reliable sources with high standards, and conducting all business processes with integrity and honesty. Collaborating with nickel, coal, and limestone producers/suppliers to ensure a consistent long-term capability to meet market demands.

# TRACK RECORD

2016

— — — — The company was established.

2021

- — — —
- The company obtained the Mining Business License for the transportation and sale of metallic mineral commodities, coal commodities, and non-metallic mineral commodities.
  - The company recorded its inaugural coal sales.

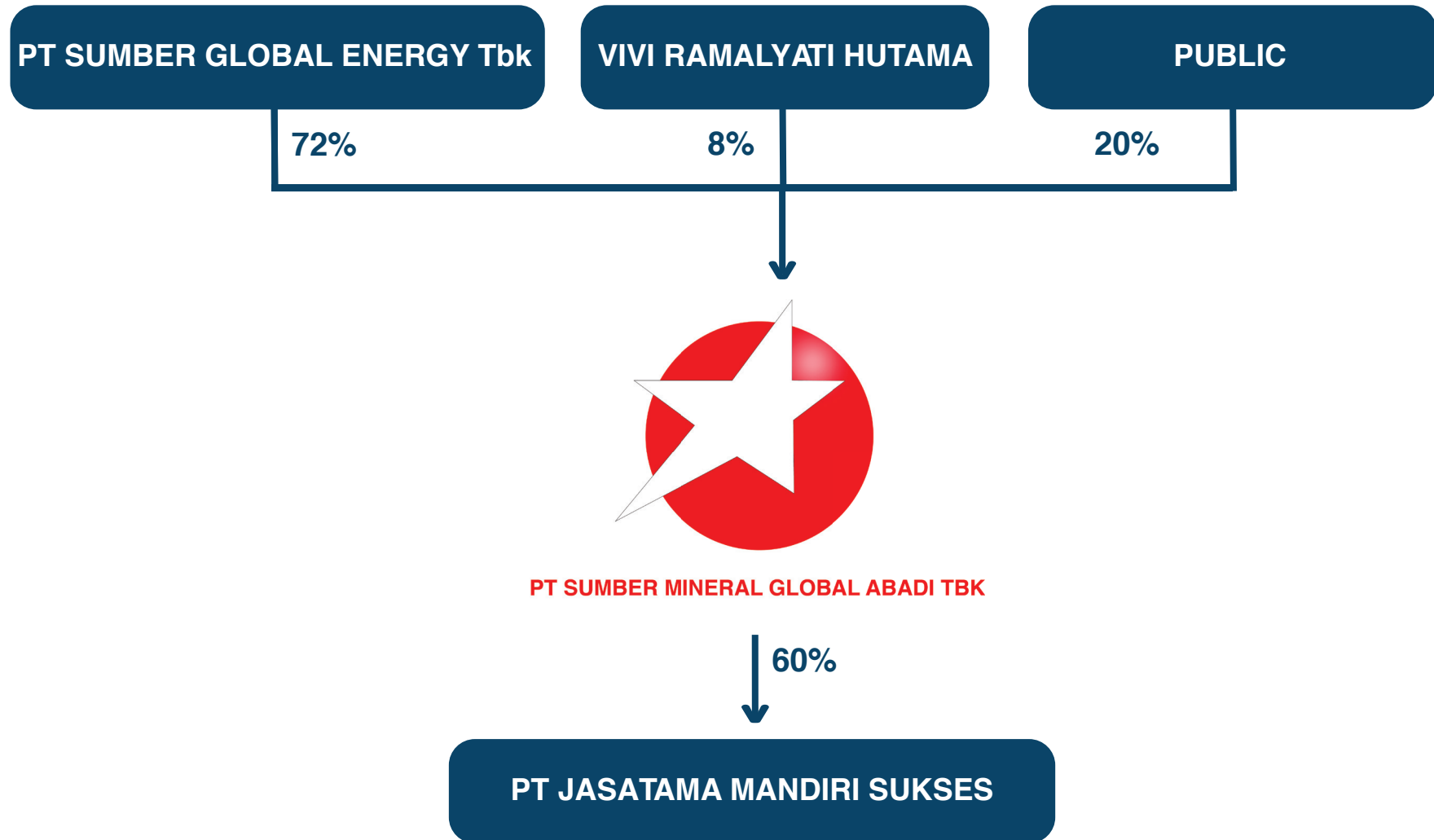
2022

- — — —
- The company recorded its inaugural nickel sales.
  - The company acquired PT Jasatama Mandiri Sukses (“JMS”).

2023

— — — — The company plans to list its shares at Indonesia Stock Exchange

## CORPORATE STRUCTURE WITHIN THE GROUP



# CORPORATE MANAGEMENT



**WELLY THOMAS**  
President Commissioner



**G. A. YURISIO**  
Independent Commissioner



**IR. JULIUS EDY WIBOWO**  
Director



**RAYMOND NG CHI CHING**  
Director

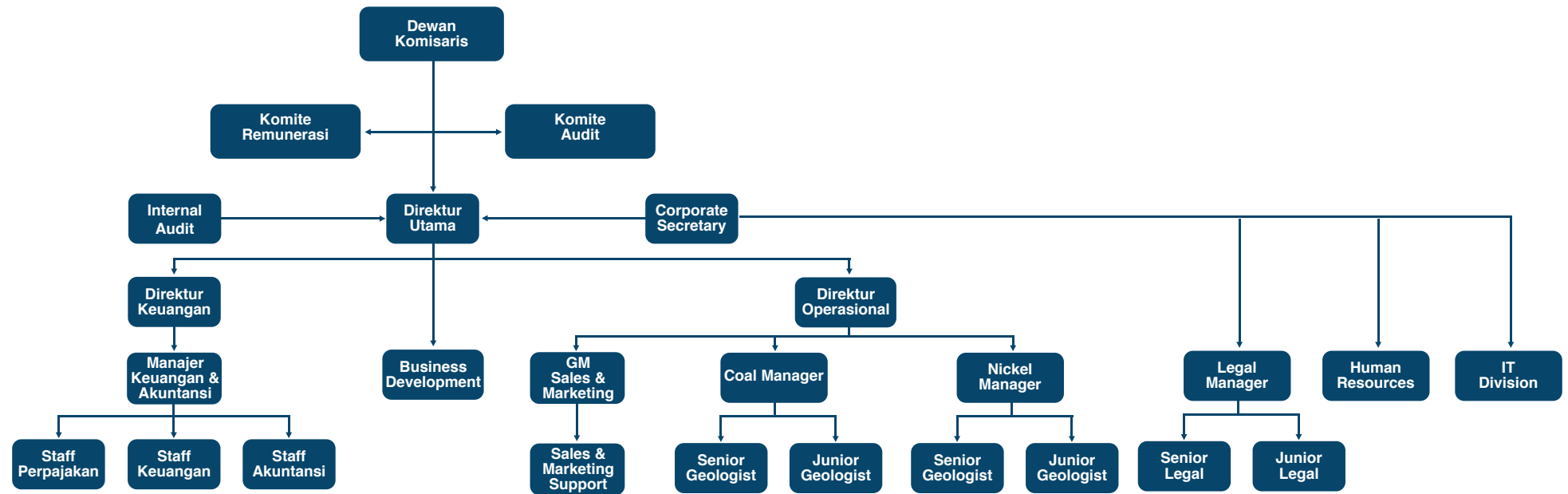


**HU BO**  
Director



**DIMAS ARIE WICAKSANA**  
Director

# ORGANIZATIONAL STRUCTURE





SUBSIDIARIES AND  
ASSOCIATE ENTITIES



No	Name	Address	Ownership Percentage	Line Of Business	Operation Status
1	PT Jasatama Mandiri Sukses Tbk	Morowali, Central Sulawesi	60%	Limestone Mining	Will be operated on 1 <sup>st</sup> half 2025

## THE COMPANY PRODUCTS (1)



**Coal**

Utilized as industrial fuel and power plant (PLTU) purposes.



**Nickel**

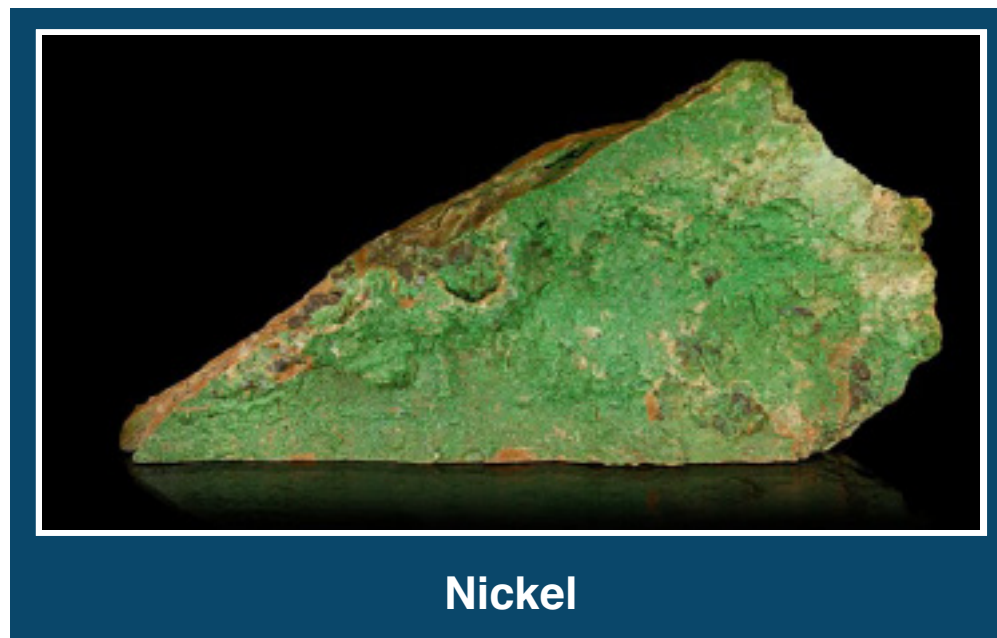
Utilized as a raw material in the production of battery stones and stainless steel. Utilized as a raw material in the production of battery stones and stainless steel.



**Limestone**

Utilized as a flux and plays a role in the nickel ore calcination process.

## COMPANY PRODUCT SPECIFICATIONS (2)



PARAMETERS	CONTENT
Ni	1,5 – 1,9 %
Fe	12 – 25 %
SiO <sub>2</sub> / MgO	<2,5 x
Moisture	Maks. 35%



## COMPANY PRODUCT SPECIFICATIONS (3)



**Coal**

SEGAR			
PARAMETERS	BASIS	TYPICAL	REJECTION
Gross Calorific Value (kcal/kg)	ARB	5.300 kcal/kg	Below 5.100 kcal/kg
Total Moisture	ADB	23 – 25 pct	-
Inherent Moisture	ADB	13 pct	-
Ash Content	ADB	8 pct	Above 10 pct
Volatile Matter	ADB	40 pct	-
Fixed Carbon	ADB	By difference	-
Total Sulphur	ADB	0,5 pct	Above 0,5 pct
HGI		45	-
Size 0-50mm		90 pct	-

SEGAR			
PARAMETERS	BASIS	TYPICAL	REJECTION
Gross Calorific Value (kcal/kg)	ARB	4.800 kcal/kg	Below 4.600 kcal/kg
Total Moisture	ADB	28 – 30 pct	-
Inherent Moisture	ADB	14 pct	-
Ash Content	ADB	8 pct	Above 10 pct
Volatile Matter	ADB	39 – 45 pct	-
Fixed Carbon	ADB	By difference	-
Total Sulphur	ADB	0,8 pct	Above 1 pct
HGI		40 – 45	-
Size 0-50mm		90 pct	-

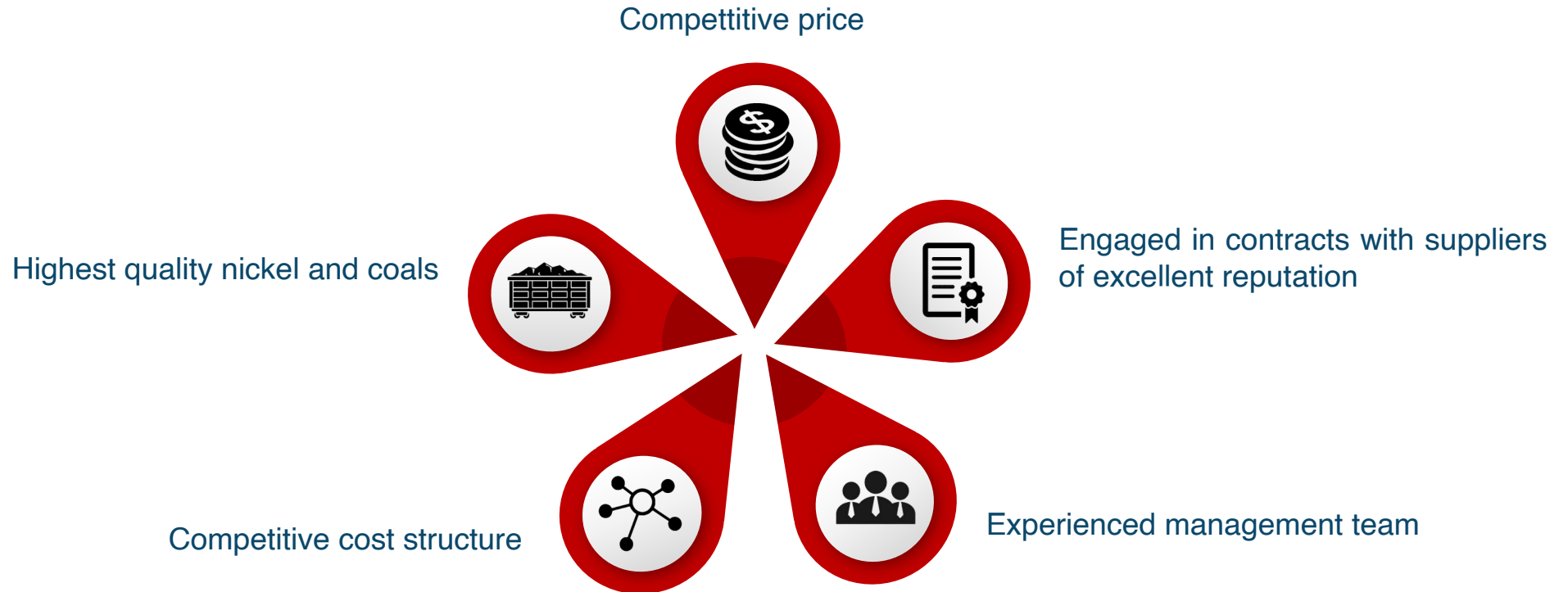
## COMPANY PRODUCT SPECIFICATIONS (4)



**Coal**

SEGAR			
PARAMETERS	BASIS	TYPICAL	REJECTION
Gross Calorific Value (kcal/kg)	ARB	3.800 kcal/kg	Below 3.600 kcal/kg
Total Moisture	ADB	44 pct	Above 46 pct
Inherent Moisture	ADB	12 - 16 pct	-
Ash Content	ADB	6 pct	Above 8 pct
Volatile Matter	ADB	40 - 45 pct	-
Fixed Carbon	ADB	By difference	-
Total Sulphur	ADB	0,5 pct	Above 0,6 pct
HGI		50	-
Size 0-50mm		90 pct	-

# COMPETITIVE ADVANTAGES





# HISTORY



2016

The company was incorporated



2021

- The Company obtained licensing for transportation and sales commodities for Coals, Metal Minerals, and Non-Metal Minerals commodities
- The Company booked the first sale of coal



2022

The company booked the first sale of nickel and acquire PT Jasatama Mandiri Sukses



2024

Listen in Indonesia stock exchange  
(Code : SMGA)

# BUSINESS STRATEGY



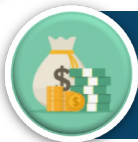
**Focusing on high-quality nickel and coal**



**Maintaining and enhancing customer relationship**



**Expansion of market distribution network**



**Enhancing operational efficiency**

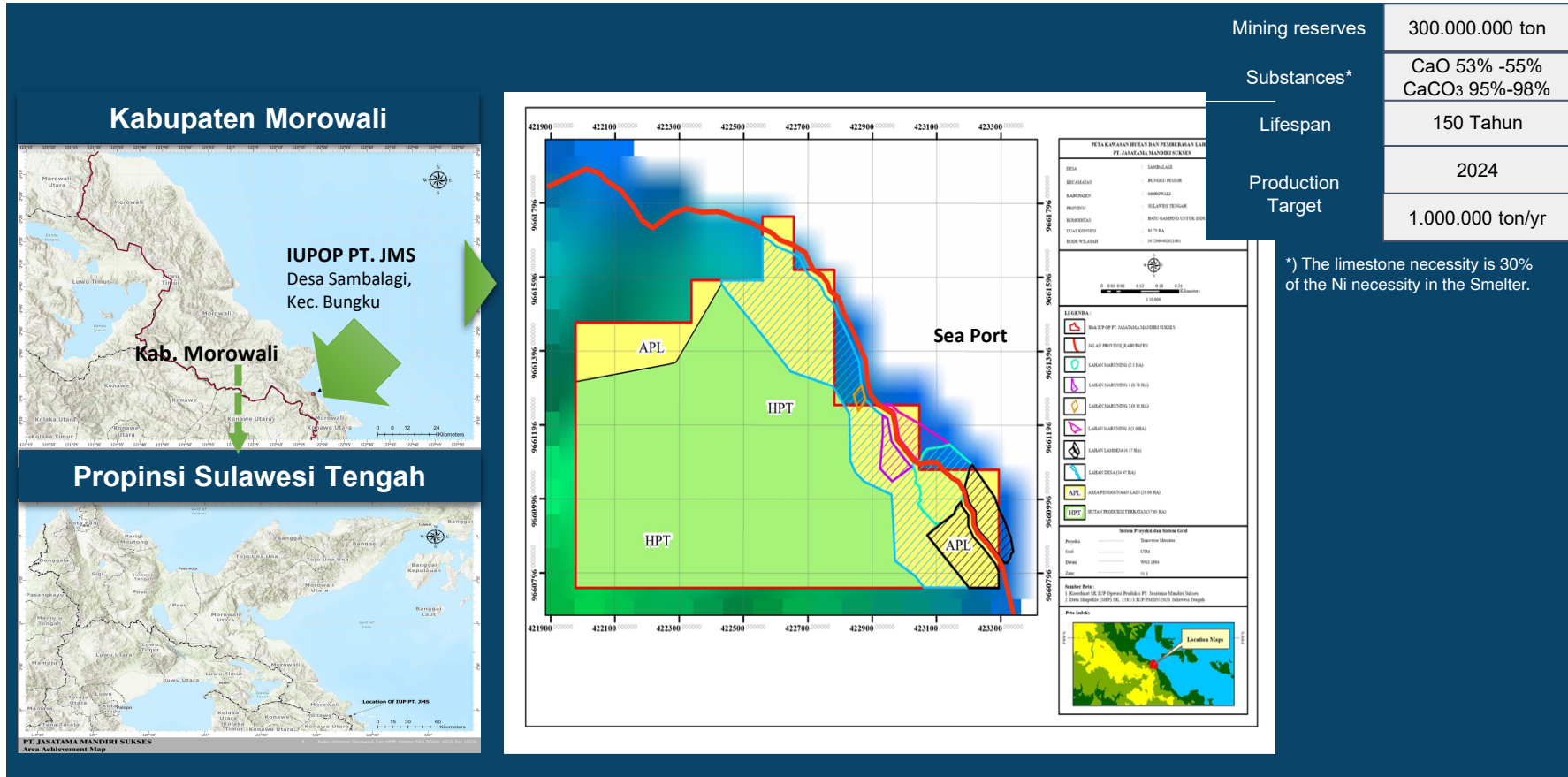


**Improvement of human resources quality with competitive edge**



**Business line expansion to broaden market sectors**

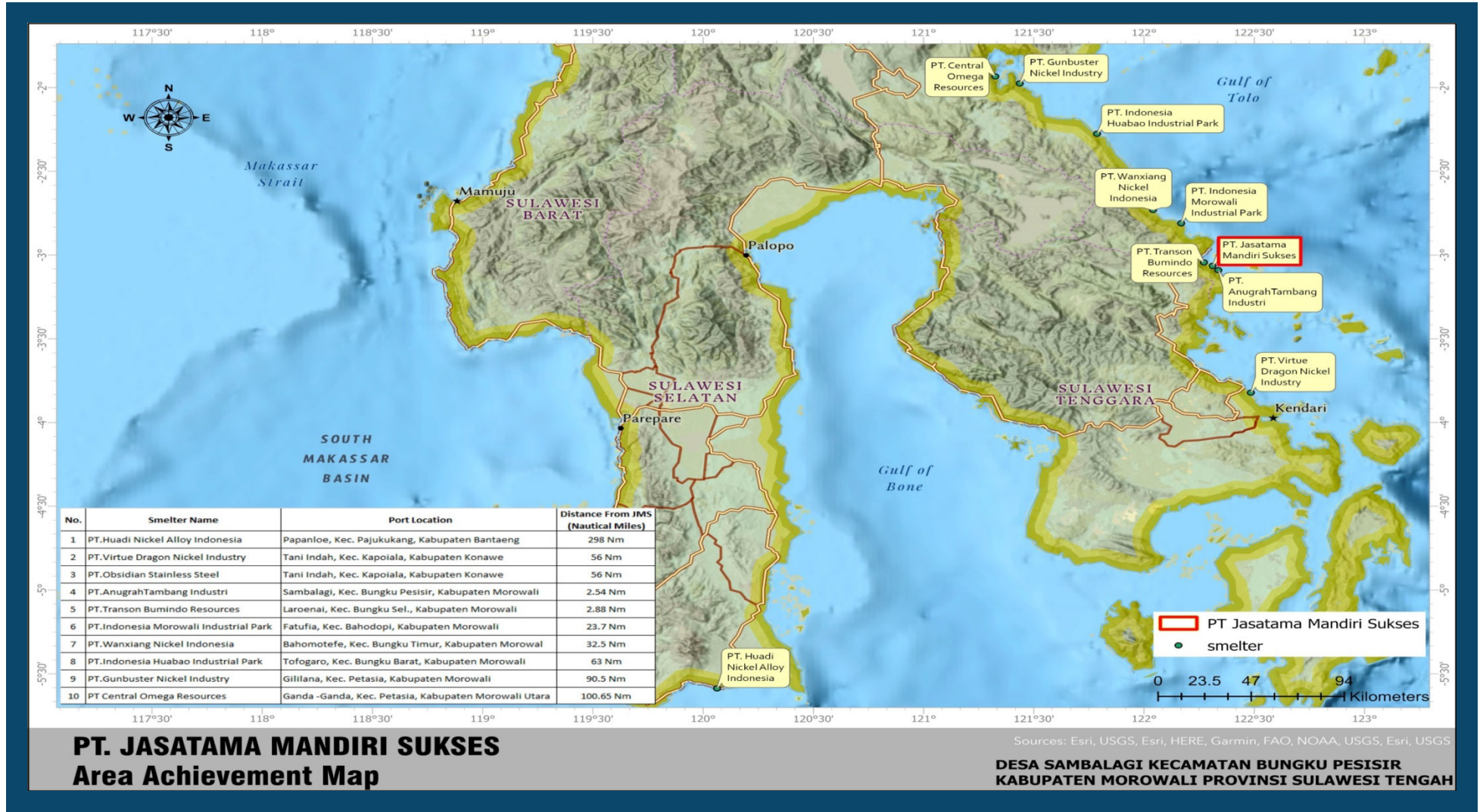
## OVERVIEW OF BUSINESS ACTIVITIES AND OPERATIONS OF SUBSIDIARY ENTITIES



PT Jasatama Mandiri Sukses (“JMS”) was established in 2021 and obtained approval for the elevation of its Mining Business License to the operational production stage (Izin Usaha Pertambangan Operasi Produksi) in July 2023 which valid for a period of 20 years.



# THE LOCATION OF THE SMELTER NEARBY JMS



## **PT SUMBER MINERAL GLOBAL ABADI Tbk**

Graha BIP2<sup>nd</sup> Floor  
Jl. Gatot Subroto Kav. 23  
Jakarta Selatan 12930  
Indonesia

Phone : 021-5229900  
Fax : 021-2500243  
Email : [corsec@smgagroup.com](mailto:corsec@smgagroup.com)  
Website : [smgagroup.co.id](http://smgagroup.co.id)